

## Overview

### Frequency Band

860MHz-960MHz

### Chip

MR6

### Antenna Dimensions

15x40mm/0.59x1.57inch

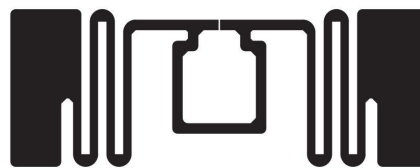
### International Standard

ISO/IEC 18000-63 Type C

### Applications

Apparel

Retail



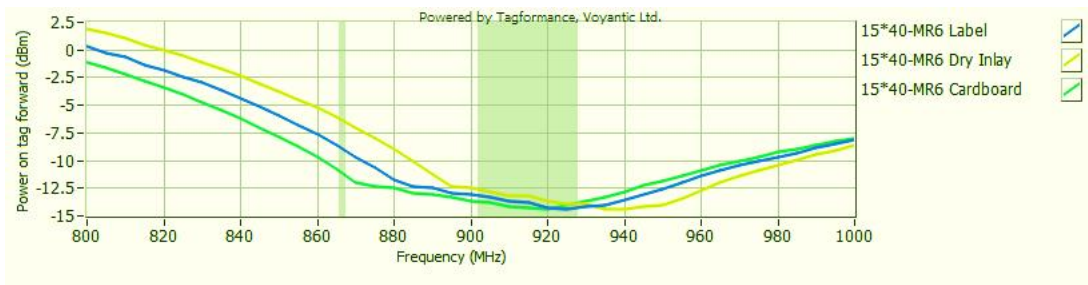
This antenna is designed for apparel and retail applications. Its high efficiency and excellent performance make it widely used in apparel field. Using RFID technology to help the fashion industry brands in supply chain management, retail management and the enterprise internal management to achieve rapid scanning and reading.

OSRFID has an in-house R&D team well equipped with state of art Lab equipment which can customize a suitable label for your real-world applications.

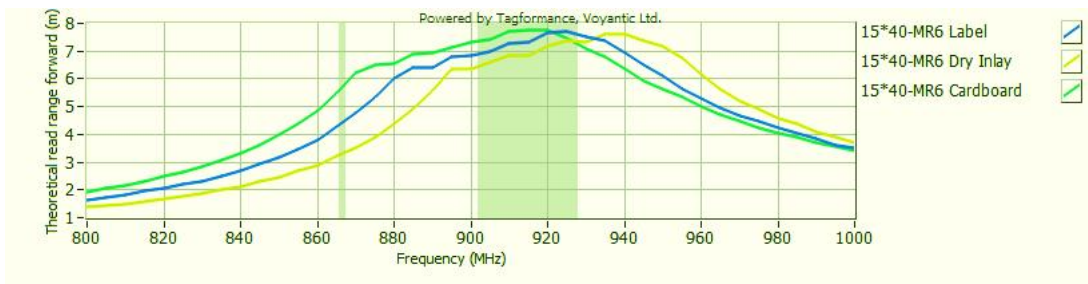
### Technical Features

Model	OS31032	OS32002	OS33486
Delivery Format	Dry Inlay	Wet Inlay	Label
EPC Memory	96Bits	96Bits	96Bits
User Memory	0Bits	0Bits	0Bits
Die-cut Dimension	-	43*18mm	43*18mm
Inlay Substrate	50um PET	50um PET	50um PET
Standard Pitch	21.59mm	21.59mm	21.59mm
Web Width	53mm	55mm	54mm
Core Size	76.2mm/3inch	76.2mm/3inch	76.2mm/3inch
Quantity / Reel	10000 ± 300Pcs/Reel	5000 ± 2Pcs/Reel	2500 ± 2Pcs/Reel
Operating Temperature	-20°C to +50°C (20% to 80%RH)		
Remarks	Wet inlay and Label are regular size. Other size can be customized.		

## Sensitivity



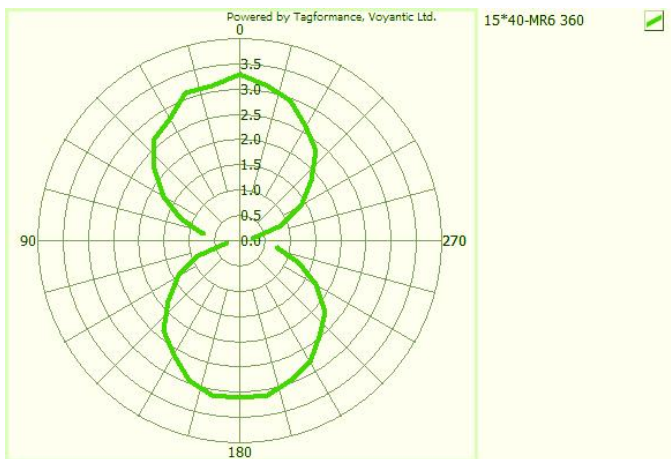
## Read Range



Sensitivity&Read Range Test power: 4W EIRP

For countries that allow 2W ERP, please reduce the result by 11%

## Orientation sensitivity



All graphs are indicative: performance in real life applications may vary.